

MERVILLE GALLERIES

NEWSLETTER SPRING 2017

Petworth Park Antiques & Fine Art Fair 5th–7th MAY



PHOTO: JUSTIN PIPERGER AND DOUGLAS ATFIELD

Ivon Hitchens (1893–1979) • *Monument in Forest*, 1973
oil on canvas, 47 x 143 cm, signed and dated lower left

We will be on **Stand 8**, presenting recent acquisitions by **Ivon Hitchens**, **Keith Vaughan**, **Patrick Heron**, **Benjamin Hannavy Cousen** and **Susie MacMurray**.

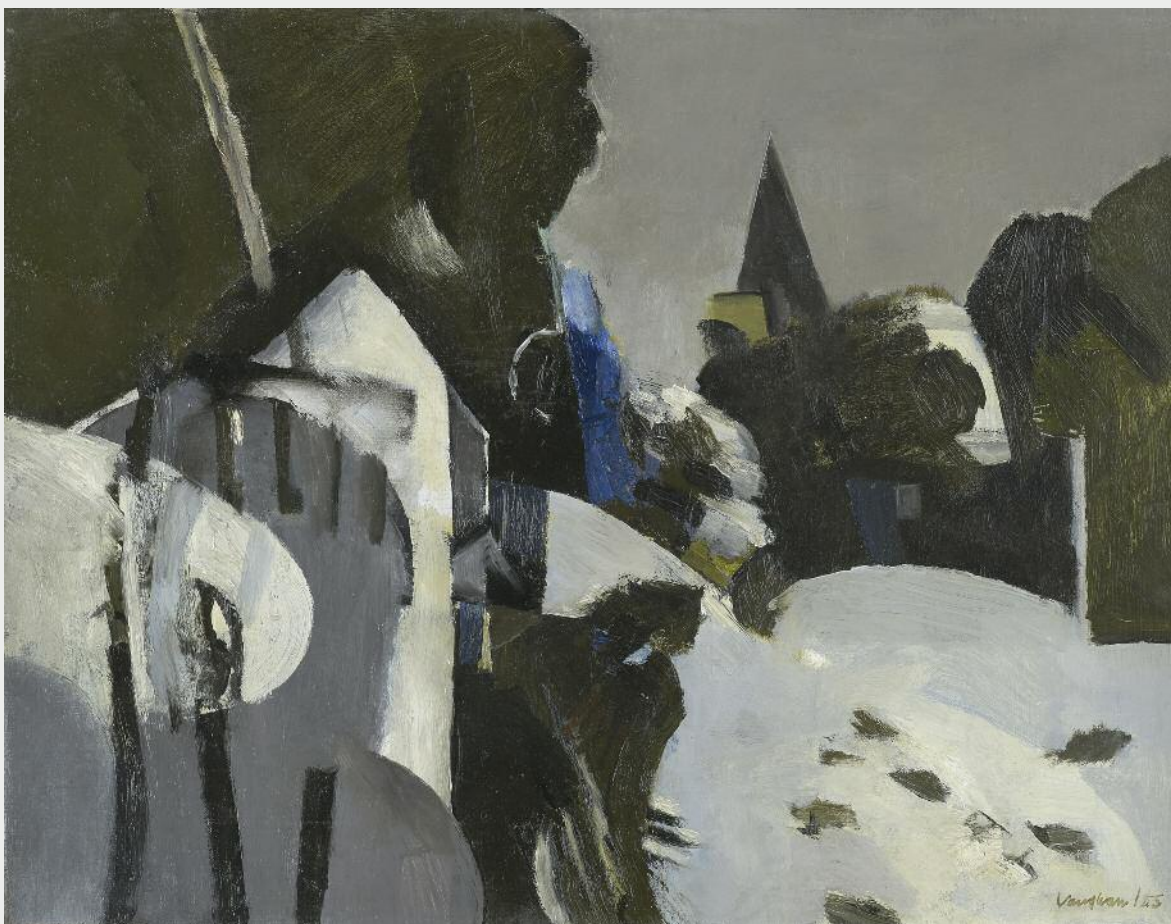
A complimentary invitation (for three people) to the fair can be found at the end of this newsletter, and we hope you have the opportunity to visit.

For further information see www.petworthparkfair.com

SEPTEMBER

Benjamin Hannavy Cousen **Mall Galleries, London**

Our exhibition of recent paintings by Benjamin Hannavy Cousen is now scheduled for Mall Galleries, London, from **19th to 30th September 2017**. Opening hours will be 10 am to 5 pm, but please note that the closing on the final day will be at 1 pm.



Keith Vaughan (1912–1977)

Village Under Snow oil on canvas, 35.6 x 45.7 cm. Signed and dated 'Vaughan/55' (lower right)

PROVENANCE

The Leicester Galleries, 1955; purchased from the above by Peter Meyer, for £52.10.00; his sale, Christies London, 6th June 2008, lot 44; Agnew's; Private Collection, UK

EXHIBITED

Leicester Galleries, London, *Keith Vaughan*, February 1955, catalogue not traced.

Hatton Gallery, Newcastle, *Keith Vaughan Retrospective*, 1956, no.33.

Whitechapel Art Gallery, London, *Keith Vaughan Retrospective*, March–April 1962, no.175.

Arts Council, London, *Keith Vaughan; a selection from the Whitechapel Exhibition*, 1962 no. 24.

(the exhibition travelled to The Scottish National Gallery of Modern Art, Edinburgh; Bradford City Art Gallery; Southampton City Art Gallery; and Birmingham City Art Gallery).

LITERATURE

John Wood Palmer, *Keith Vaughan Artist and Sculptor*, 1961 (reproduced).

Philip Vann and Gerard Hastings, *Keith Vaughan*, Lund Humphries/Osborne Samuel 2012, reproduced in colour p.65.

One of ten oils produced by Vaughan in 1955, all pure landscapes. The location is almost certainly Hampstead Heath; a companion picture from the same year, *Snow on Hampstead Heath*, 40.6 x 50.8 cm, sold at Christies on 17th November 2006, lot 59. Peter Meyer, of timber company Montague Meyer, was a prominent young collector of Modern British Art in the 1940's and 1950's; highlights from his collection were shown in the Arts Council exhibition *Three Young Collectors* in 1952 and at the *Venice Biennale* in the same year. More than 30 works from his collection were offered at Christies in 2008.



Susie MacMurray (b.1959)

Small Strange Fruit 1, 2017

Reclaimed military barbed wire; silk velvet

45 x 30 x 20 cm approx

PHOTO: R.N. HANNAVY COUSEN



Benjamin Hannavy Cousen (b.1977)

Russian Magic Tales, 2017

acrylic on canvas

140 x 120 cm



William Turnbull (1922–2012)

Tree Trunk, 1976

charcoal on paper

78 × 57 cm

Untitled (Tree), 1976

charcoal on paper

79.4 × 59 cm



YOUR INVITATION

THE PETWORTH PARK ANTIQUES & FINE ART FAIR

THE MARQUEE, PETWORTH PARK, WEST SUSSEX GU28 0QY

FRIDAY 5th to SUNDAY 7th MAY 2017

THE
ANTIQUES
DEALERS
FAIR
LIMITED

THE PETWORTH PARK ANTIQUES & FINE ART FAIR

THE MARQUEE, PETWORTH PARK
PETWORTH, WEST SUSSEX GU28 0QY

FRIDAY 5 – SUNDAY 7 MAY 2017



SUPPORTING
EXCELLENCE
IN BRITISH
CRAFTSMANSHIP

OPENING TIMES

Friday 11.00 - 20.00
Saturday 10.30 - 18.00
Sunday 10.30 - 17.00

INVITATION FOR THREE
WITH THE COMPLIMENTS OF
MERVILLE GALLERIES

FAIR ENQUIRIES

01797 252030
info@adfl.co.uk
www.petworthparkfair.com

SUPPORTED BY



National
Trust

Offered for sale will be a tempting selection of fine period furniture, vintage watches, clocks, jewellery, indoor and garden sculpture, silver, lighting, oil and watercolour paintings, ceramics, glass, 20th century design objects, antiquities and many decorative and unique works of art spanning the centuries.

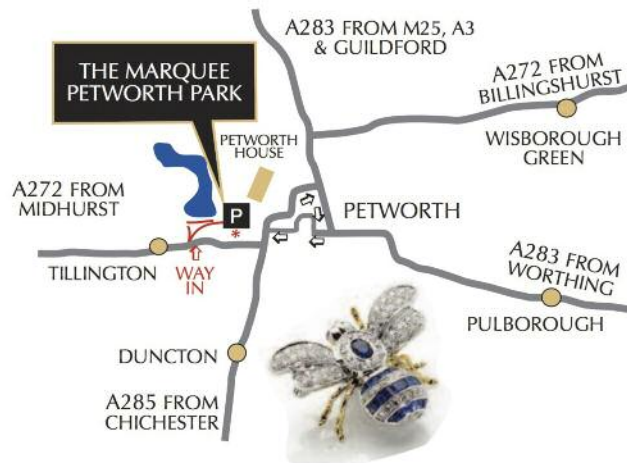
RAISING FUNDS FOR



Reg Charity number 1106893

HOW TO GET THERE

Pedestrian entrance at Cricket Lodge.*
Vehicle entrance at New Lodges on the A272 Tillington Road.
AA sign posted. Ample free parking.
Courtesy shuttle between the fair and Petworth town centre.
Bar & Restaurant in the Fair.



MEDIA PARTNER

etc
magazine

SUPPORTED BY



BOLD & REEVES

LONDON

MANAGING THE FINEST PROPERTIES



ANDERSON
ROWNTREE

SOLICITORS



PAADA
PETWORTH
ANTIQUES &
DECORATIVE
ARTS



savills
Petworth
Business
Association

Visitors to the fair enjoy free admission to the palatial mansion and park of Petworth during the three day event with this ticket or the fair programme. For further information about Petworth, National Trust, visit www.nationaltrust.org.uk/petworth

Additional fair tickets are £10 per person at the fair reception.

NYETIMBER

PRODUCT OF ENGLAND